

**Content:**  
DOWNLOADER™ 1 pc    CARTRIDGE: 1 pc    Manual: 1 pc

DOWNLOADER™ is a device specially designed for i-Cybie™. It can download i-Cybie™ program from Internet to the CARTRIDGE on i-Cybie™.



Fig.1



Fig.2

**Computer System Requirements:**  
CPU: Pentium 333 or better  
O/S: Windows 95™ or Windows 98™  
Internet accessible

**Battery Installation:**

Make sure the ON/OFF Switch is at "OFF"  
Use a Phillips head screw-driver to loose the screw in counter-clockwise on the battery compartment. (See Figure 1.)  
Insert 4 new AAA size alkaline batteries with "+" & "-" signs shown in the battery compartment. (See Figure 2.)  
Close the battery compartment cover with a Phillips head screw-driver in clockwise.

**How To Use:**

1. Download & Run the Driving Program:  
You can visit our web site: <http://www.silverlit.com> for the Driving program. You can save the downloaded program in your computer, such as in directory D:\Downloader (We will use this directory to describe the operating method), and double click on the driving program icon of "Downloader.exe", the program will automatically run on your computer.
2. Download i-Cybie™ program from Internet:  
You can visit our web site: <http://www.silverlit.com> for the most updated i-Cybie™ program. You can save the downloaded program in your computer, such as in directory D:\Downloader. One of the file is named as xxxx-h.bin and the other one is as xxxx-l.bin.
3. Put CARTRIDGE in the slot on DOWNLOADER™.
4. Connect your DOWNLOADER™ to computer parallel port.
5. Switch DOWNLOADER™ on, the red LED on panel will light on.
6. In directory D:\Downloader, double click on the driving program icon of "Downloader.exe", the program will automatically run on your computer. (See Figure 3.) for reference. The Green circle before "Connection status" shows the DOWNLOADER™ has been connected well, otherwise, it will be in red.



Fig.3

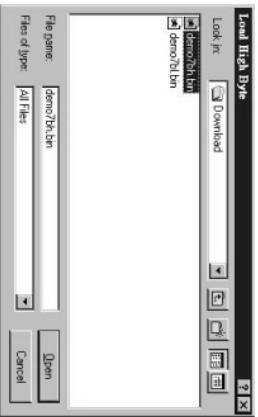


Fig.4

7. Press button of "Low Byte" on "Cybie Downloader" Desktop, will open the directory of D:\Downloader, select file xxxx-l.bin, and open it. (See Figure 4), then Press button of "High Byte" to open file of xxxx-h.bin.

8. Click button "PC → Cartridge" to begin downloading. A blue bar grows to indicate the downloading process, also a word "Downloading ----" blinks in RED color. (See Figure 5.) for reference.



Fig.5



Fig.6

9. The "Downloading OK" on the desktop shows that "downloading has been completed". See (Figure 6.) for reference.
10. Switch DOWNLOADER™ off, remove the CARTRIDGE from DOWNLOADER™.
11. Disconnect your DOWNLOADER™ with computer.
12. Put CARTRIDGE in the slot on i-Cybie™, i-Cybie™ will play the program downloaded.

**Cautions:**

- Non-rechargeable batteries are not to be recharged.
- Rechargeable batteries are to be removed from the Downloader before being charged.
- Rechargeable batteries are only to be charged under adult supervision.
- Different types of batteries or new and used batteries are not to be mixed.
- Only batteries of the same or equivalent type as recommended are to be used.
- Batteries are to be inserted with correct polarity.
- Exhausted batteries are to be removed from the Downloader.
- The supply terminals are not to be short-circuited.

**Note:**

- Parental guidance is recommended when installing or replacing batteries.
- New and alkaline batteries are recommended to use in this Downloader to obtain best and maximum performance.
- You are advised to replace with new batteries as soon as the function becomes impaired.
- Users should keep and retain this information for future reference.
- Users should keep strict accordance with the manufacturer's instructions while operating the product.

**Care and Maintenance:**

- Always remove batteries from the Downloader when it is not being used for a long period of time.
- Wipe the Downloader gently with a clean damp cloth.
- Keep the Downloader away from direct sunlight and/or direct heat.
- Do not submerge the Downloader into water that can damage the electronic assemblies.

**Power Supply:**

**Battery Requirement for DOWNLOADER™**  
Power Supply : DC 6.0V 0.12W  
Rating : 4 x 1.5V "AAA"/LR03 /AM4  
Batteries : 4 x 1.5V "AAA" size alkaline batteries (not included)  
Requires 4 x 1.5V "AAA" size alkaline batteries (not included)